

recycle more **at the Kerbside**

**Your guide
to what goes
where!**



Don't forget...
keep glass separate!



Search the collection finder on
richmondshire.gov.uk

@RichmondshireDC

Richmondshire District Council collects household, garden and recycling waste from over 23,000 households

Householders can use their boxes and bags to collect card, paper, cartons, aerosols, plastics, cans and glass on a fortnightly basis.

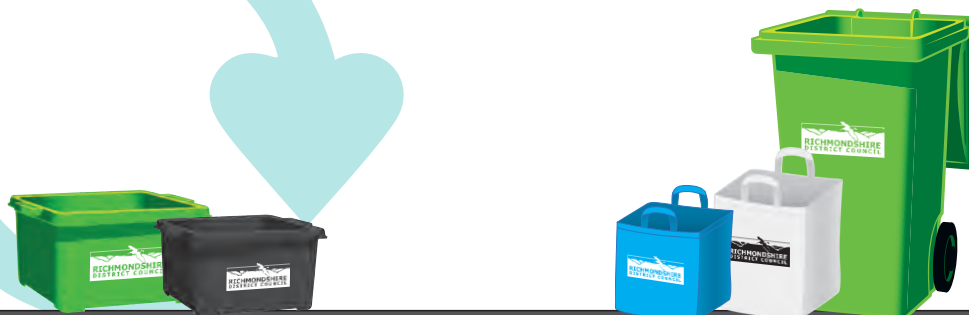
Textiles can also be recycled - they must be put in untied plastic bags.

Glass must be kept separate from everything else - and can be placed either in the current green box using a divider or in a separate smaller black box. All paper and card should be put in the current blue bag.

The dividers, black boxes and extra boxes and bags can be collected at any council community office. Visit richmondshire.gov.uk to find their locations.

Household waste and recycling is collected on alternate weeks - bins, boxes and bags must be kerbside by 6.30am on your collection day. For collection days see calendar and bank holiday changes on: richmondshire.gov.uk

Assisted collections are available to anyone who cannot manage to move bins, bags and boxes due to age, disability or medical condition - please contact the council on 01748 829100.





Boxes

Glass must be kept separate - please place in your green or black box using a divider; if you have a second green box use that just for glass; or request a black box See page 2

✓ YES...

- Glass bottles and jars
- Deodorant containers
- Food and drink cans
- Pet food cans
- Aerosols
- Plastic bottles - including trigger spray
- Foil/aluminium trays
- Plastic pots and trays, tubs, yogurt pots and margarine tubs
- Cartons



✗ NO...

- Black plastics
- Plastic film/bags
- Drinking glasses
- Pyrex glass
- Window glass
- Broken glass
- Oil cans
- Paint tins
- DIY product containers
- Paint aerosols
- Bubble wrap
- Plant pots
- Washing up bowls
- Polystyrene
- Corrugated and plastic sheeting
- Foil pouches
- Nappies
- Pill packs
- Toys
- CDs and DVDs



All must be rinsed clean and empty of food and liquid



Bags

✓ YES...

- Newspaper/magazines
- Greeting cards
- All paper
- All envelopes
- Yellow pages/directories
- Junk mail,
- Shredded paper

- All card: brown, grey, corrugated, egg boxes, cardboard tubes, food packaging card, composite card and plastic, cardboard and fibre packing, and carrier trays



All card must be flat packed and contained in the bag

✗ NO...

- Takeaway pizza boxes
- Takeaway containers
- Used kitchen roll/tissues
- Wallpaper

- Photographs
- Books
- Fish and chip paper
- Polystyrene

Textiles

Please leave textiles next to your recycling bags and boxes in an untied plastic bag

✓ YES...

- Clothes
- Shoes
- Towels
- Sheets

✗ NO...

- Duvets
- Pillows
- Cushions



Grey Bin



YES...

Non recyclables only



Green Bin

Garden waste is only collected from subscribing households - a valid licence must be attached to the bin



YES...

- Grass cuttings
- Clippings
- Leaves
- Hedge clippings
- Cut flowers
- Plants and weeds
- Windfalls
- Bark
- Small pet bedding



NO...

- Stones and soil
- Turf
- Peelings and food waste
- Ash
- Cat and dog waste



Please do not overfill your bin - if it is too heavy to move, it will be too heavy for the bin lift

Other Ways to recycle

Composting

Compost is best made in a home composter.
Contact 0844 571 4444 or getcomposting.com
for the latest offers and subsidised compost bins.

You can home compost:

- Shredded paper and torn card
- Rabbit and guinea pig bedding
- Dead flowers and cut plants
- Unprepared garden produce and vegetable peelings
- Soft hedge clippings
- Leaves and grass cuttings
- Weeds – apart from persistent weeds and weeds in seed
- Tea bags, coffee grounds and egg shells



Cooked food can be composted in special waste digesters.

Christmas Trees

Take your tree to a household waste recycling centre or if you subscribe to the garden waste scheme place your chopped up tree in or beside your green bin.

There will be a special collection for them in January.



Bulky Waste Collections

We can collect larger household items - such as furniture and white goods - which cannot be taken through the normal service. There is a charge and you must book by calling 01748 829100 or by visiting richmondshire.gov.uk

Love Food, Hate Waste



For ideas on how to save money by making the most of food check out lovefoodhatewaste.com

You can also offer items for free at various freecycle and facebook sites, or through websites. Charity shops also accept donations.

Household Waste Recycling Centres

Many items can be recycled at your local Household Waste Recycling Centres in Richmondshire which are sited at Brompton on Swale and Leyburn. They are all closed on Wednesdays. Some items are chargeable - for more information contact North Yorkshire County Council on the details below.

 garden waste	 hardcore & rubble	 wood & timber	 plasterboard	 foil	 food tins & drink cans	 scrap metal
 mixed glass bottles & jars	 plastic bottles	 car batteries	 tyres	 used engine oil	 mixed textiles & clothes	 cooking oil
 bric a brac	 furniture	 books	 cardboard	 paper	 telephone directories	 batteries
 fluorescent tubes	 tvs & monitors	 fridges & freezers	 large appliances	 small appliances	 gas bottles	 waste for landfill

Household Waste Recycling Centres are provided by North Yorkshire County Council

Call: 01609 780780

Email: waste.management@northyorks.gov.uk

Visit: northyorks.gov.uk



Mercury House, Station Road, Richmond DL10 4JX
01748 829100 | enquiries@richmondshire.gov.uk | richmondshire.gov.uk

This information is available in alternative formats and languages